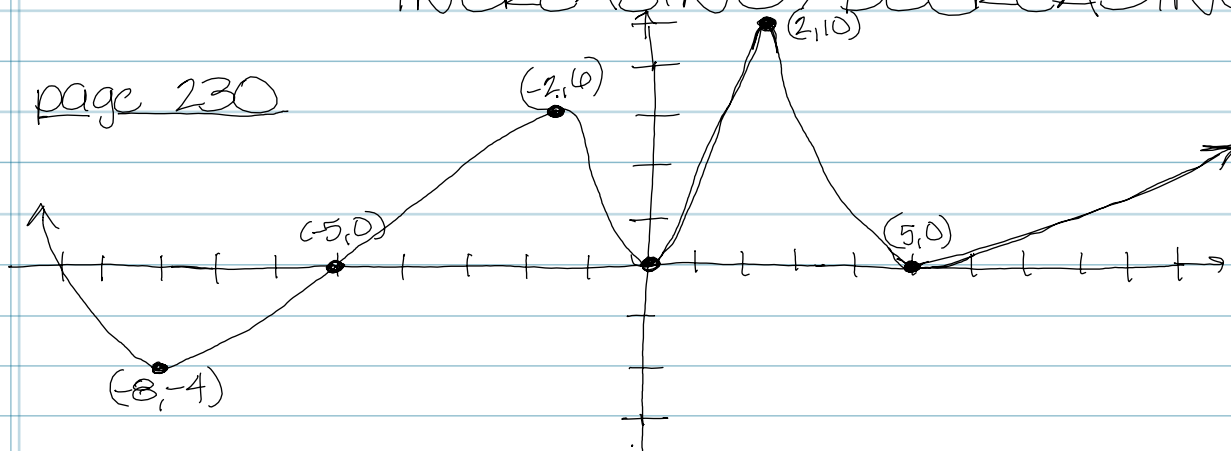


## SECTION 3.3

↳ SLOPES (Rate of change)  
MINS/MAX'S  
INCREASING/DECREASING

page 230



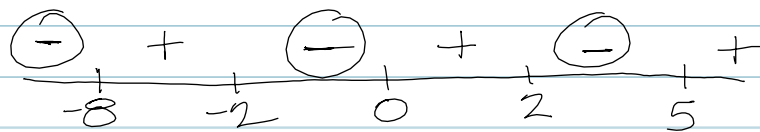
12] Is  $f$  decreasing on  $(-8, 4)$ ?  
(x values)  
no

14] Is  $f$  decreasing on interval  $(2, 5)$ ?  
yes

16] List the intervals where  $f$  is decreasing.

focus  
pts  
→ mins/max

\* never  
have  
brackets  
on  
mins/max



$(-\infty, -8) \cup (-2, 0) \cup (2, 5)$

Ex) where does  $f(x)$  have a relative maximum?  
(x values)

$(-2, 6)$   $(2, 10)$   $-2 \neq 2$

relative = all the peaks (highest)

where is the absolute max? 2

what is the absolute max? 10